

A-Level		
Paper 1: Introductory Topics in Psychology	Paper 2: Psychology in Context	Paper 3: Issues and Options in Psychology
<p><u>Which topics are assessed?</u></p> <ul style="list-style-type: none"> • A: Social Influence • B: Attachments • C: Memory • D: Psychopathology <p>(all include Research methods and Maths)</p>	<p><u>Which topics are assessed?</u></p> <ul style="list-style-type: none"> • A: Biopsychology • B: Approaches in Psychology • C: Research Methods <p>(all include Research methods and Maths)</p>	<p><u>Which topics are assessed?</u></p> <ul style="list-style-type: none"> • A: Issues and Debates • B: Relationships • C: Schizophrenia • D: Addictions <p>(all include Research methods and Maths)</p>
<p><u>How are they assessed?</u></p> <ul style="list-style-type: none"> • Written exam: 2 hours • 96 marks in total • 33.3% of A-level 	<p><u>How are they assessed?</u></p> <ul style="list-style-type: none"> • Written exam: 2 hours • 96 marks in total • 33.3% of A-level 	<p><u>How are they assessed?</u></p> <ul style="list-style-type: none"> • Written exam: 2 hours • 96 marks in total • 33.3% of A-level
<p><u>What are the questions like?</u></p> <p>Section A (24 marks) : multiple choice, short answer and extended writing (up to 16 marks)</p> <p>Section B (24 marks) : multiple choice, short answer and extended writing (up to 16 marks)</p> <p>Section C (24 marks) : multiple choice, short answer and extended writing (up to 16 marks)</p> <p>Section D (24 marks) : multiple choice, short answer and extended writing (up to 16 marks)</p>	<p><u>What are the questions like?</u></p> <p>Section A (24 marks) : multiple choice, short answer and extended writing (up to 16 marks)</p> <p>Section B (24 marks) : multiple choice, short answer and extended writing (up to 16 marks)</p> <p>Section C (48 marks): multiple choice, short answer and extended writing</p>	<p><u>What are the questions like?</u></p> <p>Section A (24 marks) : multiple choice, short answer and extended writing (up to 16 marks)</p> <p>Section B (24 marks) : multiple choice, short answer and extended writing (up to 16 marks)</p> <p>Section C (24 marks) : multiple choice, short answer and extended writing (up to 16 marks)</p> <p>Section D (24 marks) : multiple choice, short answer and extended writing (up to 16 marks)</p>
<p><u>What do the examiners test? The Assessment Objectives:</u></p> <p>* AO1: Demonstrate <i>knowledge and understanding</i> of scientific ideas, processes, techniques and Procedures</p> <p>* AO2: <i>Apply knowledge and understanding</i> of scientific ideas, processes, techniques and procedures: in a theoretical context, in a practical context, when handling qualitative data, when handling quantitative data.</p> <p>* AO3: <i>Analyse, interpret and evaluate</i> scientific information, ideas and evidence, including in relation to issues, to: make judgements and reach conclusions, develop and refine practical design and procedures</p>		

Specification AQA

You probably know very little about the organ that governs your every perception and sensation, thought and behaviour. Choosing Psychology will help you address this: Psychology is the science of the mind. Although we can't observe the mind directly, everything we do, think, feel and say is determined by its functioning. So psychologists take human behaviour as the raw data for testing their theories about how the mind works.

In Psychology you'll investigate and evaluate research on new areas of learning including memory, abnormality and childhood, as well as disorders of various kinds. As Psychology is a Social Science, you'll also develop and apply your knowledge of the methods required for investigations, and in A level will write analytical essays.

PSYCHOLOGY

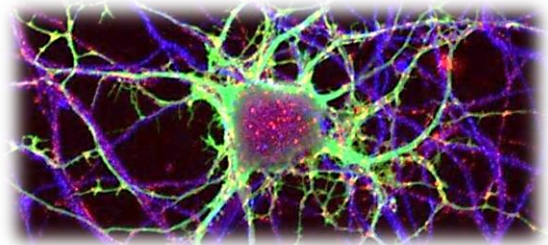


Some of the areas covered in Year 1 include:

- The way in which psychological investigations are carried out
- Memory processes and memory improvement
- Attachment relationships between young children and parents
- Obedience to authority and conformity
- Defining and treating abnormal behaviour
- Differing psychological Approaches to explaining behaviour

Areas covered in Year 2 of the A Level course include:

- Biopsychology
- Relationships
- Addictions
- Schizophrenia
- Understanding and practice of scientific methods
- The debates surrounding the causes of human behaviour
E.g. Nature? Or Nurture? A result of Free Will? Or Determined?



SKILLS:

Using scientific method to carry out investigations
Analysis and evaluation of research
Application of research to theory

For further details please contact:

Mrs Kirke and Miss Findlay
